

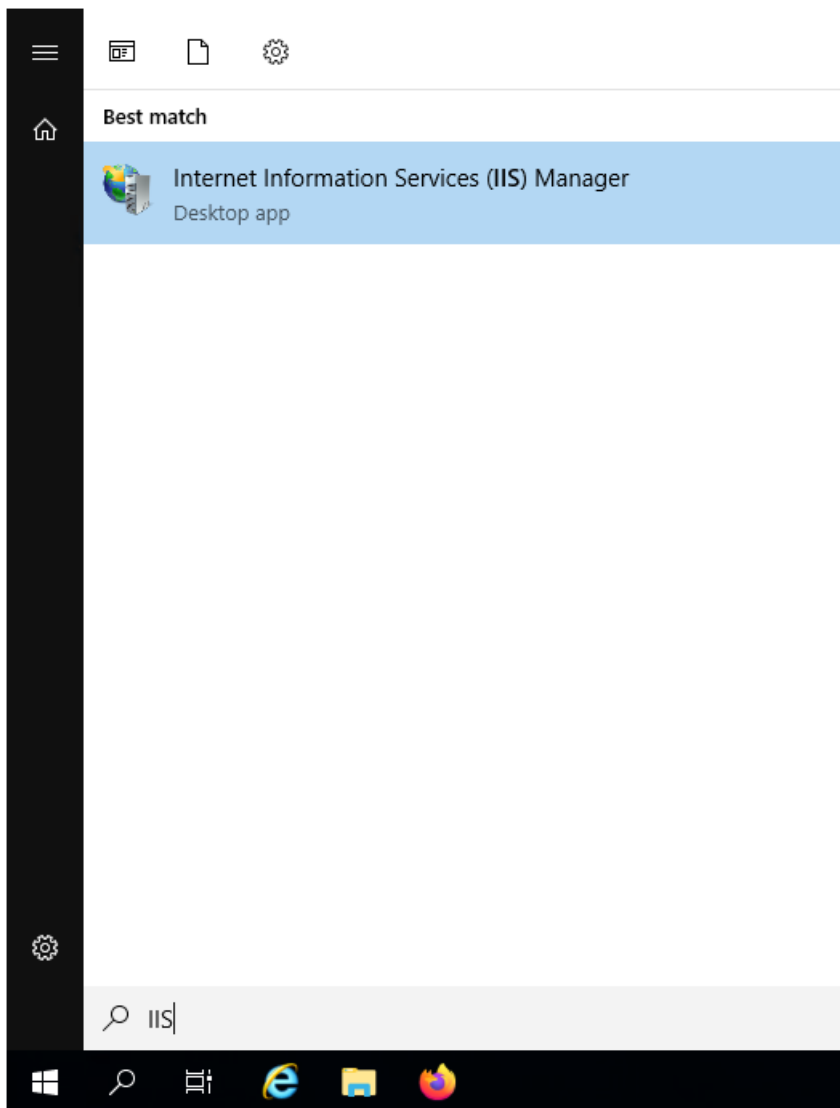
Uključivanje dodatnih "PATCH" metoda na IIS-u

U ovom članku

Zadnja promjena 23/07/2025 1:10 pm CEST | Objavljeno 23/07/2025

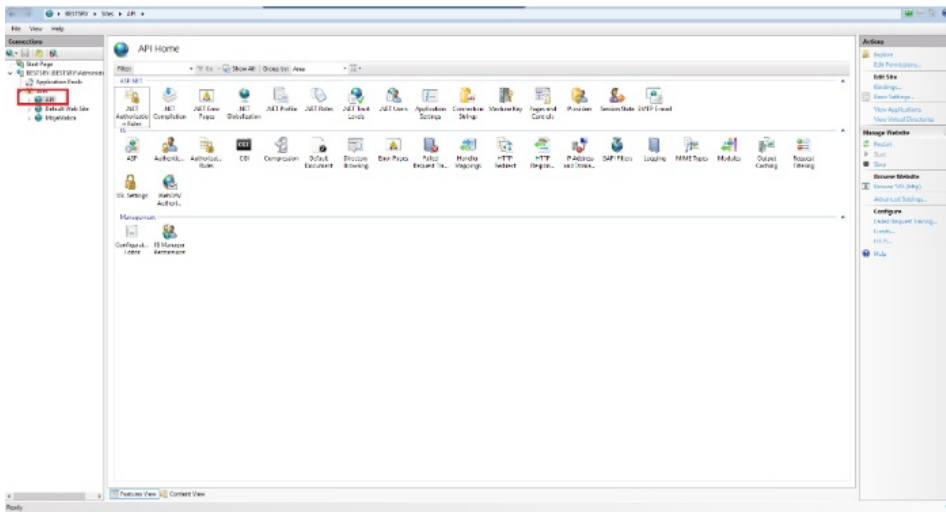
Za djelovanje API metoda potrebno je na serveru na kojem je API, na IIS (Internet Information Services) uključiti funkciju "PATCH" u Handler Mappings.

To napravimo tako da pokrenemo IIS:

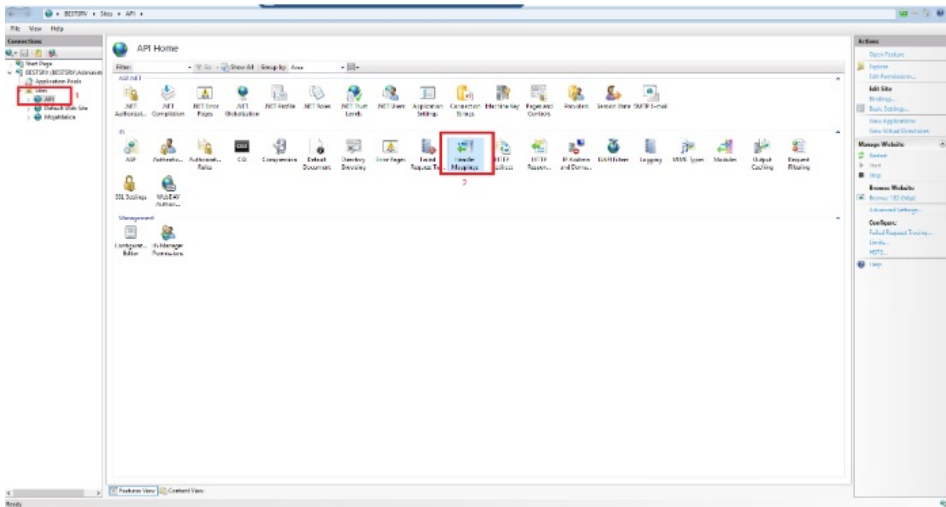


U otvorenom prozoru treba vam web stranica koje ima u naslovu "API" (u većini slučajeva su to dvije web stranice. Jedna za produkciju, druga za

test).



Izaberete web stranicu i dvoklikom otvorite Handler Mappings:



Potrebno je uključiti navedene dvije funkcije:

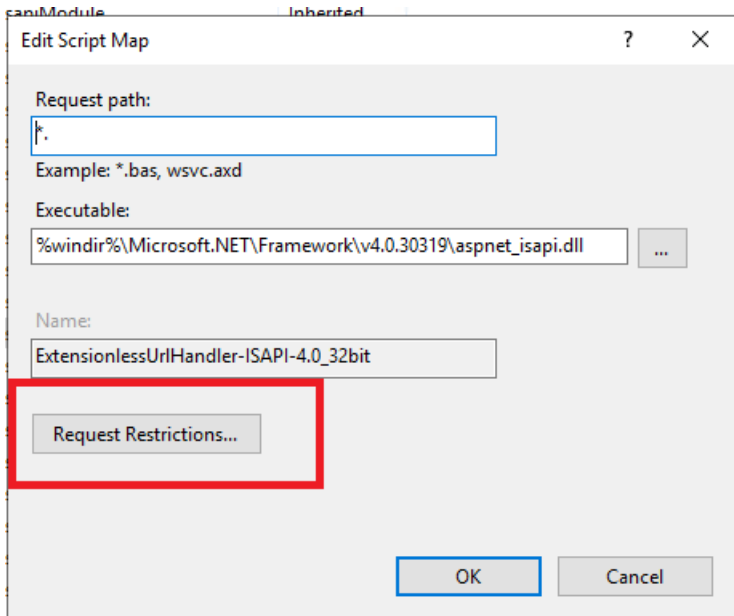
Handler Mappings

Use this feature to specify the resources, such as DLLs and managed code, that handle responses for specific request types.

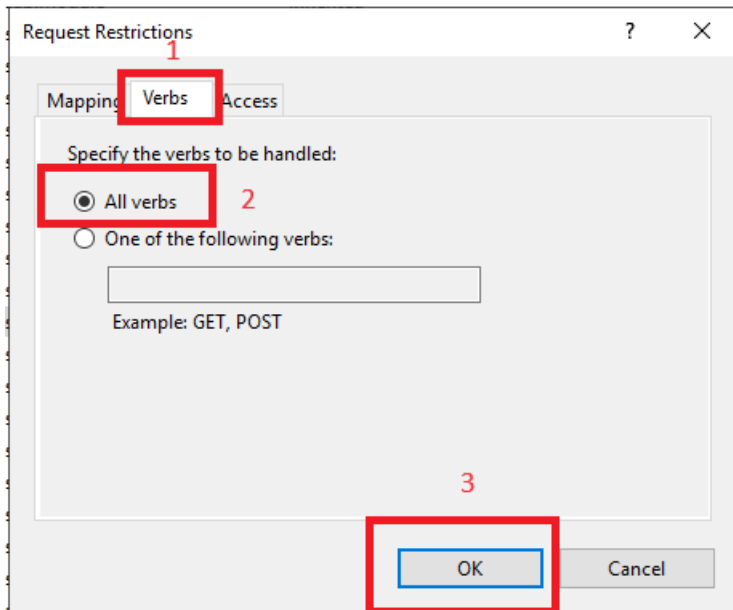
Name	Path	State	Path Type	Handler	Entry Type
Disabled					
CGI.exe	*.cgi	Disabled	File	CGIModule	Inherited
ISAPI-IS	*.is	Disabled	File	IsapiModule	Inherited
Enabled					
ASPClassic	*.asp	Enabled	File	IsapiModule	Inherited
aspx (ISAPI 4.0_32bit)	*.aspx	Enabled	Unspecified	IsapiModule	Inherited
aspx (ISAPI 4.0_64bit)	*.aspx	Enabled	Unspecified	IsapiModule	Inherited
AIS (ISAPI 2.0)	*.ais	Enabled	Unspecified	IsapiModule	Inherited
AIS (ISAPI 2.0_64)	*.ais	Enabled	Unspecified	IsapiModule	Inherited
AIS (ISAPI 4.0_32bit)	*.ais	Enabled	Unspecified	IsapiModule	Inherited
AIS (ISAPI 4.0_64bit)	*.ais	Enabled	Unspecified	IsapiModule	Inherited
ashx (ISAPI 4.0_32bit)	*.ashx	Enabled	Unspecified	IsapiModule	Inherited
ashx (ISAPI 4.0_64bit)	*.ashx	Enabled	Unspecified	IsapiModule	Inherited
ashx (ISAPI 4.0_32bit)	*.ashx	Enabled	Unspecified	IsapiModule	Inherited
ashx (ISAPI 4.0_64bit)	*.ashx	Enabled	Unspecified	IsapiModule	Inherited
ExtensionlessUrlHandler-ISAPI...	*	Enabled	Unspecified	IsapiModule	Inherited
HttpHandlerFactory-ISAPI...	*	Enabled	Unspecified	IsapiModule	Inherited
HttpHandlerFactory-ISAPI...	*	Enabled	Unspecified	IsapiModule	Inherited
HttpHandlerFactory-ISAPI...	*	Enabled	Unspecified	IsapiModule	Inherited
HttpHandlerFactory-ISAPI...	*	Enabled	Unspecified	IsapiModule	Inherited
HttpHandlerFactory-ISAPI...	*	Enabled	Unspecified	IsapiModule	Inherited
HttpHandlerFactory-ISAPI...	*	Enabled	Unspecified	IsapiModule	Inherited
HttpHandlerFactory-ISAPI...	*	Enabled	Unspecified	IsapiModule	Inherited
HttpHandlerFactory-ISAPI...	*	Enabled	Unspecified	IsapiModule	Inherited
HttpHandlerFactory-ISAPI...	*	Enabled	Unspecified	IsapiModule	Inherited
OPTIONALHttpHandler	*	Enabled	Unspecified	ProtocolSupportModule	Inherited
PageHandlerFactory-ISAPI 2.0	*.aspx	Enabled	Unspecified	IsapiModule	Inherited
PageHandlerFactory-ISAPI 2.0...	*.aspx	Enabled	Unspecified	IsapiModule	Inherited
PageHandlerFactory-ISAPI 4.0...	*.aspx	Enabled	Unspecified	IsapiModule	Inherited
PageHandlerFactory-ISAPI 4.0...	*.aspx	Enabled	Unspecified	IsapiModule	Inherited
SecurityCertificate	*.cer	Enabled	File	IsapiModule	Inherited
SimpleHandlerFactory-ISAPI 2.0	*.ashx	Enabled	Unspecified	IsapiModule	Inherited
SimpleHandlerFactory-ISAPI 2...	*.ashx	Enabled	Unspecified	IsapiModule	Inherited
SimpleHandlerFactory-ISAPI 4...	*.ashx	Enabled	Unspecified	IsapiModule	Inherited
SimpleHandlerFactory-ISAPI 4...	*.ashx	Enabled	Unspecified	IsapiModule	Inherited
SSNIC_ahm	*.ahm	Enabled	File	ServerSideIncludeModule	Inherited
SSNIC_ahm	*.ahm	Enabled	File	ServerSideIncludeModule	Inherited
SSNIC_ahm	*.ahm	Enabled	File	ServerSideIncludeModule	Inherited

ExtensionlessUrlHandler-ISAPI...	Path	State	Path Type	Handler	Entry Type
ExtensionlessUrlHandler-ISAPI...	*	Enabled	Unspecified	IsapiModule	Inherited
ExtensionlessUrlHandler-ISAPI...	*	Enabled	Unspecified	IsapiModule	Inherited

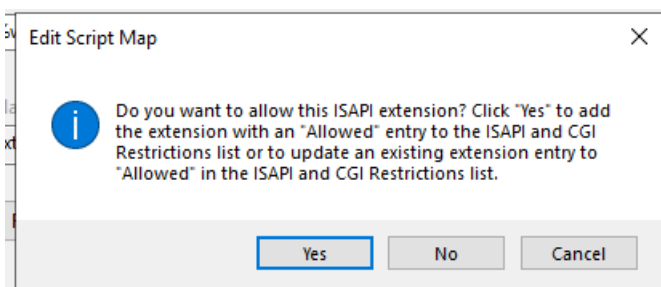
Dvoklikom na metodo se otvori dodatni prozor. U novom prozoru odaberite "Request restriction".



Kliknite na Verbs te označite All verbs, nakon toga kliknite OK i još jednom OK.



Prikazati će se obavijest na koju kliknete Yes.



Isti postupak ponovite na drugoj metodi.